



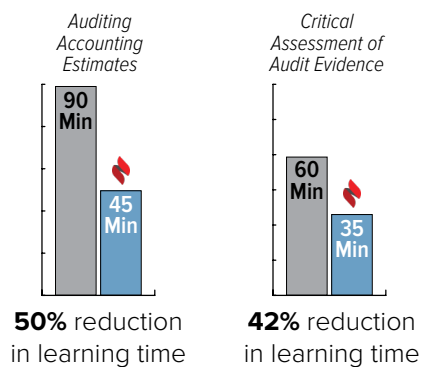
# ANNUAL ACCOUNTING CPE REQUIREMENTS IN *LESS TIME*, WITH INSIGHT INTO LEARNER KNOWLEDGE GAPS

**Problem:** The accounting profession requires that certified professionals complete hours of annual Continuing Professional Education courses, often taking accountants out of the workforce for hours, if not days at a time to meet these requirements. A large public accounting firm wants to reduce annual training time without compromising quality or readiness.

**The study:** The firm conducted a pilot with Amplifire. Two adaptive learning modules were created, **Auditing Accounting Estimates** and **Critical Assessment of Audit Evidence**. These courses were implemented across 2,917 auditing professionals, and compared to a cohort of learners that took their traditional learning courses. Following the course completion, the professionals took their qualified assessments.

## Results across 2,917 auditing professionals

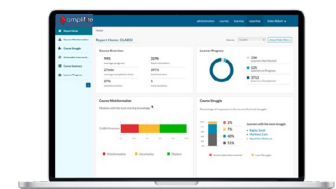
### Time Savings: Less time out of the workforce



### Better prepared: Higher pass rates using Amplifire

- **10%** higher initial pass rate in the cohort that used Amplifire for Auditing Accounting Estimates
- **33%** higher initial pass rate in the cohort that used Amplifire for Critical Assessment of Audit Evidence

### Knowledge gaps uncovered



Amplifire uncovered a **61%** knowledge gap with the traditional course

### Next Steps

Due to the early results in such a short time, this firm has expanded the pilot to the entire audit practice.

Founding members and partners of the Accounting & Professional Services Alliance:



Cohen & Co



SAX

